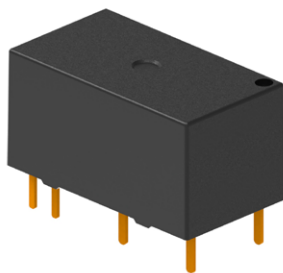


ML102



- 8A 触点切换能力
- 触点与线圈间介质耐压 3KV
- 线圈低功耗 150mW
- 外形尺寸 L × W × H: 20.4 × 10.5 × 11.3mm
- 8A Switching Capability
- 3KV Dielectric Strength Between Coil And Contacts
- Coil low power consumption: 150mW
- Outline Dimensions L × W × H: 20.4 × 10.5 × 11.3mm

ML102	-	S	-	1	-	12	-	A	-	L1	-	R	-	F	
产品结构 Structure	触点组数 Contact Group	线圈电压 Coil Voltage	触点形式 Contact Form	线圈类型 Coil Type	极性特点 Polarity	绝缘等级 Insulation Class									
产品型号 Model	S: 塑封型 无: 防焊剂型 S: Sealed Nil: Flux Proofed	1: 1组 2: 2组 1: 1 Group 2: 2 Group	03, 05, 06 12, 18, 24 VDC	A: 常开 AB: 常开 + 常闭 A: NO AB: NO+NC	L1: 0.15W 单线圈磁保持 L2: 0.3W 单稳态 L3: 0.3W 双线圈磁保持 L1: 0.15W Single coil latching L2: 0.3W Monostable L3: 0.3W Double coils latching	R: 反极性 无: 标准极性 R: Negative Polarity Nil: Positive Polarity	F: F级 无: B级 F: Class F Nil: Class B								

注意: 1A/2A 表示继电器出厂时触点处于断开状态; B 表示继电器出厂时触点处于闭合状态。

Note: 1A/2A means that relay is on the "reset" status when delivery; B means that relay is on the "set" status when delivery.

触点参数 Contact Parameters

触点形式 Contact Arrangement	1A(一组常开 1 NO)	2A(两组常开 2 NO)
触点材料 Contact Material	银合金 Silver Alloy	
接触电阻 Contact Resistance(初始 Initial)	非镀金触点 Non-gold-plated contacts: $\leq 50m\Omega$ (1A 6VDC) 镀金触点 Gold-plated contacts: $\leq 50m\Omega$ (0.1A 6VDC)	
最大切换电流 Max. Switching Current	8A	5A
最大切换电压 Max. Switching Voltage	380VAC/240VDC	
最大切换功率 Max. Switching Power	2000VA/150W	1250VA/150W
电气寿命(阻性负载) Electrical Life(Resistive load)	1×10^5 次 (AgSnO ₂ , 8A 250VAC/30VDC, 85°C, 1s 通 9s 断 ON:OFF=1s:9s)	
机械寿命 Mechanical Life	1×10^7 次 OPS	

性能参数 Characteristics

绝缘电阻 Insulation Resistance	1000M Ω (at 500VDC)	
介质耐压 Dielectric Strength	触点与线圈间 Between Coil & Contacts: 3000VAC 1min 断开触点间 Between Open Contacts: 1000VAC 1min 触点组间 Between contact groups: 2000VAC 1min	
浪涌电压(线圈触点间) Surge voltage (between coil contacts)	5.5kV(1.2 × 50 μ s)	
动作时间 Set Time	$\leq 10ms$	
释放时间(单稳态) Release time (Monostable)	$\leq 5ms$	
复归时间(磁保持) Recovery time (magnetic retention)	$\leq 10ms$	
环境温度 Ambient Temperature	-40°C ~ +85°C	
振动 Vibration	稳定性 Functional	10Hz~55Hz 2.0mm 双振幅 (DA)
	强度 Destructive	10Hz~55Hz 3.5mm 双振幅 (DA)
冲击 Shock	稳定性 Functional	196m/s ²
	强度 Destructive	980m/s ²
引出端方式 Terminal Form	印制板式 PCB	
封装形式 Construction	塑封型 Sealed, 防焊剂型 Flux Proofed	
重量 Unit Weight	约 Approx. 4.5g	

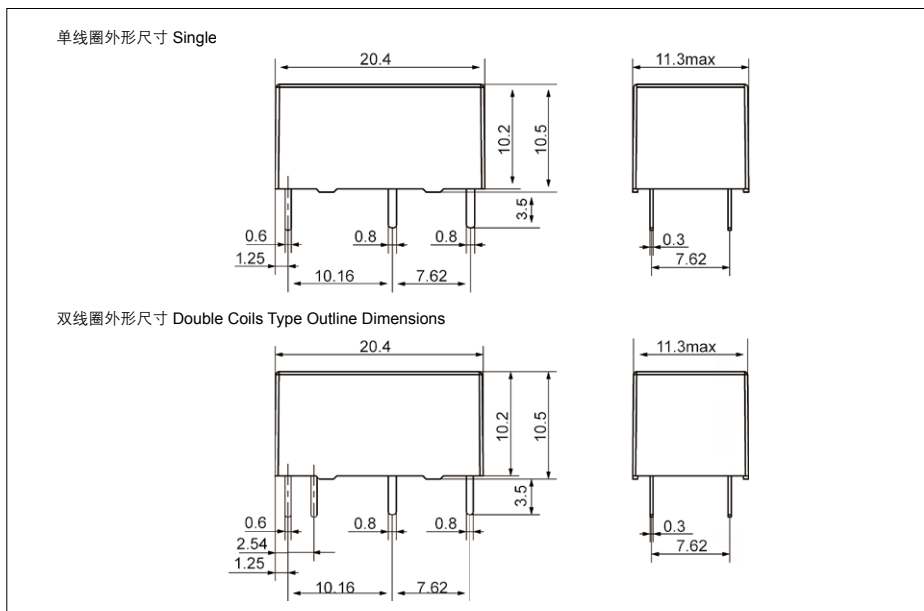
ML102

线圈规格表 Coil Data(23℃)

额定电压 Rated Voltage VDC	动作电压 Operate Voltage VDC	释放电压 Release Voltage VDC	最大允许电压 Max Allowable Voltage VDC	线圈电阻 Coil Resistance $\Omega \pm 10\%$	线圈功耗 Coil Power W
3	≤ 2.4	≤ 2.4	3.9	60	单线圈 Single coil 约 Approx. 0.15
5	≤ 4.0	≤ 4.0	6.5	167	
6	≤ 4.8	≤ 4.8	7.8	240	
9	≤ 7.2	≤ 7.2	11.7	540	
12	≤ 9.6	≤ 9.6	15.6	960	
18	≤ 14.4	≤ 14.4	23.4	2160	
24	≤ 19.2	≤ 19.2	31.2	3840	
3	≤ 2.4	≥ 0.3	3.9	30	单稳态 Monostable 约 Approx. 0.3
5	≤ 4.0	≥ 0.5	6.5	83	
6	≤ 4.8	≥ 0.6	7.8	120	
9	≤ 7.2	≥ 0.9	11.7	270	
12	≤ 9.6	≥ 1.2	15.6	480	
18	≤ 14.4	≥ 1.8	23.4	1080	
24	≤ 19.2	≥ 2.4	31.2	1920	
3	≤ 2.4	≤ 2.4	3.9	30+30	双线圈 Double coils 约 Approx. 0.3
5	≤ 4.0	≤ 4.0	6.5	83.3+83.3	
6	≤ 4.8	≤ 4.8	7.8	120+120	
9	≤ 7.2	≤ 7.2	11.7	270+270	
12	≤ 9.6	≤ 9.6	15.6	480+480	
18	≤ 14.4	≤ 14.4	23.4	1080+1080	
24	≤ 19.2	≤ 19.2	31.2	1920+1920	

外形尺寸 Outline Dimensions

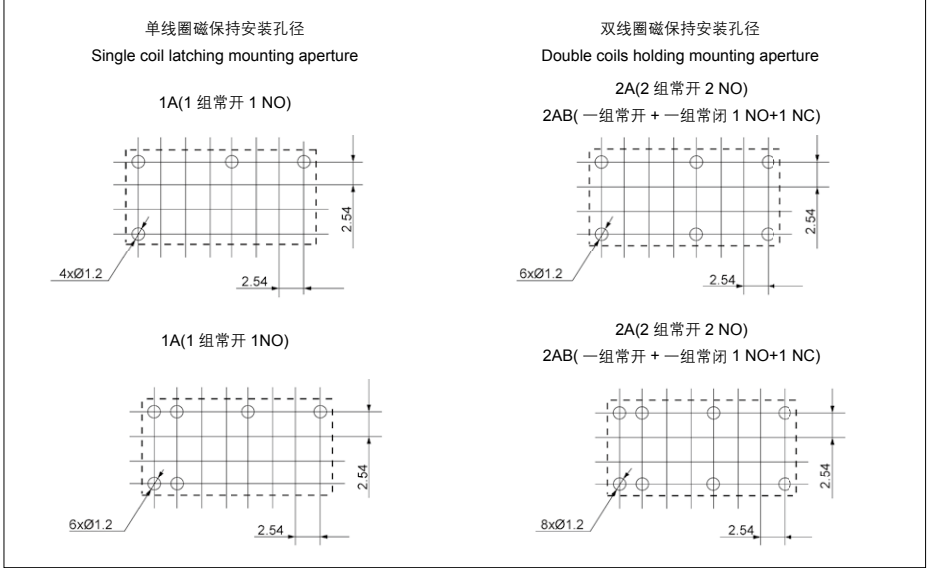
单位 Unit: mm



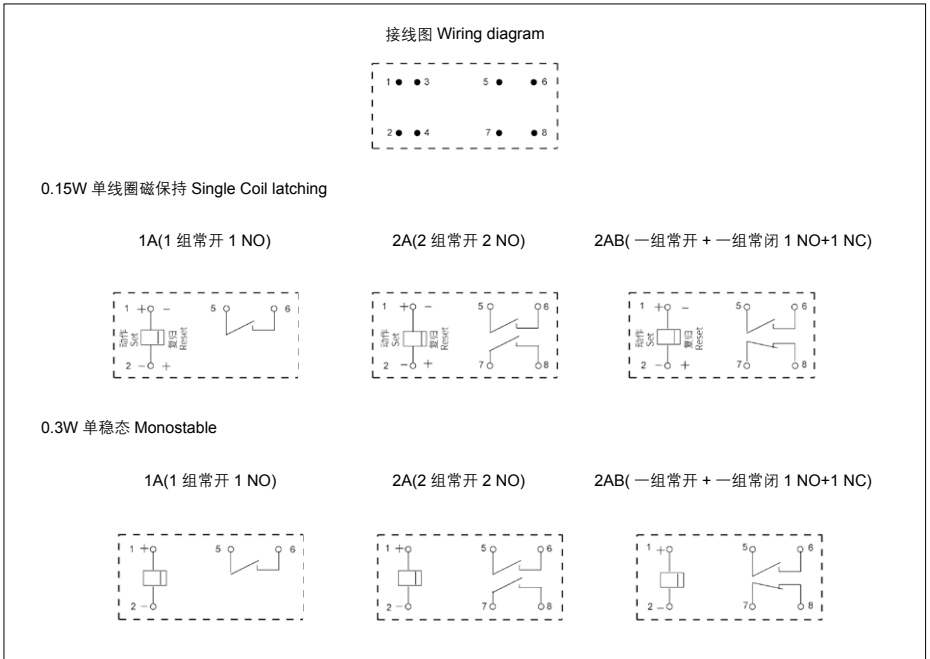
ML102

安装孔尺寸 PCB Layout(底视 Bottom View)

单位 Unit: mm

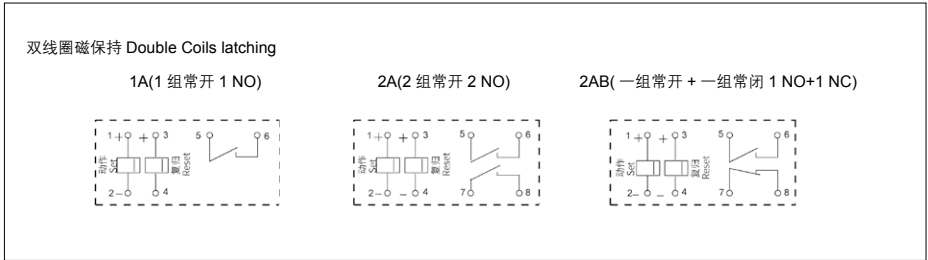


接线图 Wiring Diagram(底视 Bottom View)



ML102

接线图 Wiring Diagram(底视 Bottom View)



备注：(1) 产品部分外形尺寸未注尺寸公差，当外形尺寸 $\leq 1\text{mm}$ ，公差为 $\pm 0.2\text{mm}$ ；
 当外形尺寸在 $1\sim 5\text{mm}$ 之间时，公差为 $\pm 0.3\text{mm}$ ；当外形尺寸 $> 5\text{mm}$ 时，公差为 $\pm 0.4\text{mm}$ ；
 (2) 安装孔尺寸中未注尺寸公差均为 $\pm 0.1\text{mm}$ 。

REMARK:

- (1) In case of no tolerance shown in outline dimension: outline dimension $\leq 1\text{mm}$, tolerance should be $\pm 0.2\text{mm}$; outline dimension $> 1\text{mm}$ and $\leq 5\text{mm}$, tolerance should be $\pm 0.3\text{mm}$; outline dimension $> 5\text{mm}$, tolerance should be $\pm 0.4\text{mm}$;
- (2) The tolerance without indicating for PCB layout is always $\pm 0.1\text{mm}$.

性能曲线图 PERFORMANCE CURVE

